



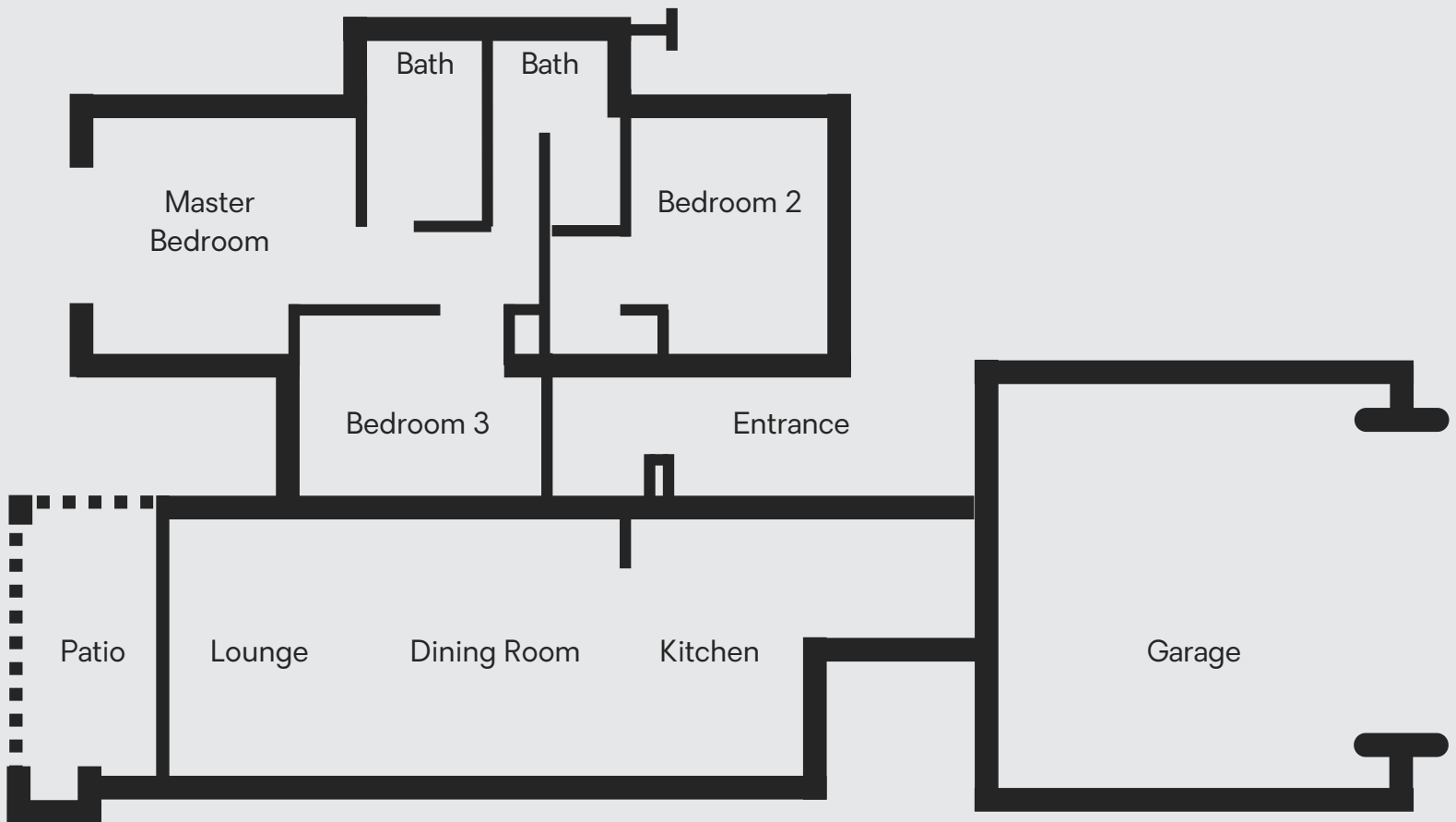
# THE GROVE

C E N C E N C E N C E N C E N C E N C E N C E N C E N C E N C E N  
T U R T U R T U R T U R T U R T U R T U R T U R T U R T U R T U R T U R  
Y 2 1 Y 2 1 Y 2 1 Y 2 1 Y 2 1 Y 2 1 Y 2 1 Y 2 1 Y 2 1 Y 2 1 Y 2 1  
C E N C E N C E N C E N C E N C E N C E N C E N C E N C E N C E N  
T U R T U R T U R T U R T U R T U R T U R T U R T U R T U R T U R T U R  
Y 2 1 Y 2 1 Y 2 1 Y 2 1 Y 2 1 Y 2 1 Y 2 1 Y 2 1 Y 2 1 Y 2 1 Y 2 1  
C E N C E N C E N C E N C E N C E N C E N C E N C E N C E N C E N  
T U R T U R T U R T U R T U R T U R T U R T U R T U R T U R T U R T U R  
Y 2 1 Y 2 1 Y 2 1 Y 2 1 Y 2 1 Y 2 1 Y 2 1 Y 2 1 Y 2 1 Y 2 1 Y 2 1



## PROPERTY FEATURES

- Sectional-Title
- Simplex
- 3-Bedrooms
- 2-Bathrooms
- Private Garden
- Clubhouse
- Transfer Cost Included
- High-end Appliances
- Contemporary Design
- Water Access Clubhouse
- Boat Launching Pad & Jetty
- Secure Estate



## THE EPITOME OF CONTEMPORARY LIVING FRAMED BY THE TRANQUIL SETTING OF THE MAGALIES BIOSPHERE

With its feet in the water and its back to the Magalies mountain lays a unique stretch of land named Leloko. Leloko is the Sotho word for family and in its rolling syllables lay a broader meaning. It suggests a culture of community. A sound respect for nature, the land and a sense of belonging. For those who need the city to thrive and the country for its healing qualities, it offers a dual lifestyle that's rare.

Nestled in the greater Leloko development, you will find The Grove, a modern-contemporary complex waiting to be explored by the avid investor, holidaymaker and first-time buyer alike. This complex also presents itself as a fantastic opportunity for the buyer that is looking to scale down in the lap of luxury.

The exceptional design, consisting of 3-bedroom and 2 full bathroom simplex units, is designed to offer the discerning buyer an excellent option of compact, ultra-modern and affordable living. Each unit will have a small private garden and pet-friendly space, and the comfort of a double garage with extra visitor parking available.

In addition to the high-end finishes and fittings throughout, the outstanding execution of interior design and spatial planning makes this house your dream home,

Make your favourite holiday destination your home!

# THE GROVE



# THE GROVE

**CENTURY 21 HARTBEESPOORT**

012 259 0165 | [WWW.CENTURY21.CO.ZA](http://WWW.CENTURY21.CO.ZA)

70 SCOTT STREET, SCHOEMANSVILLE, HARTBEESPOORT, 0216

